

## Drasco universal trolley

If you want an application that is not only stationary, or if savings of installation time helps you, our universal trolley with integrated control cabinet and height adjustment is an ideal basis for a variety of tasks.



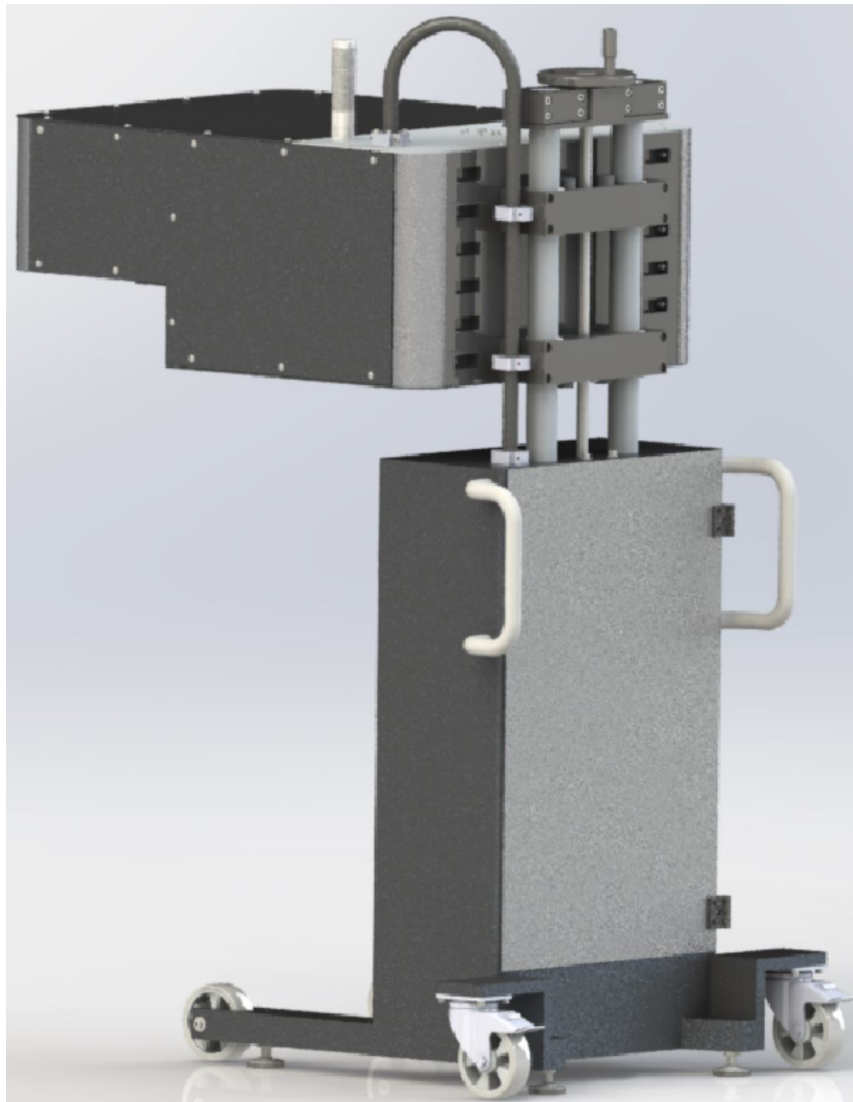
It can be fixed in a stable and tilt-proof position by means of the high-quality Blickle heavy-duty ESD castors as well as the plate feet. It is based on a robust welded construction which combines frame and control cabinet into one part.

We can customize the shape and dimensions of the trolley according to your requirements and integrate your application.

Contact us! Together we will create an effective solution!

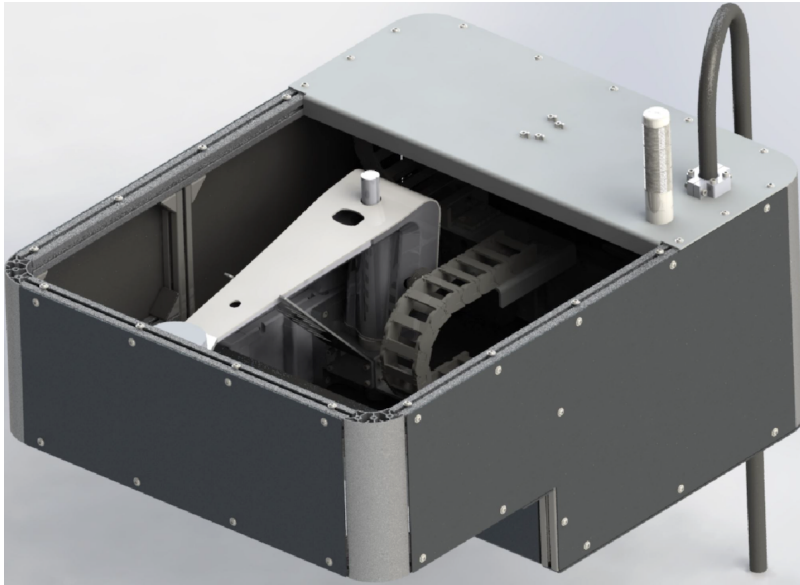
## **Application example: Optical inspection station on conveyor belt**

A manual workstation for the optical inspection of 3 workpiece carriers lying next to each other on a conveyor belt was to be partially automated. The existing camera should no longer be operated manually, but should be adjustable in x & y via joystick by means of an electric motor. This means that the operator no longer has to leave the screen position for the inspection in order to switch between the workpiece carriers. This reduces the cycle time and thus the costs of the entire process.



In addition, a height adjustment in z of 300mm was needed to adjust the focus to the workplace, as the unit is to be used in several positions. The complete electrics and electronics should be located within the desired unit.

Solution: We designed an x/y inspection axis gantry system with the desired camera and two electric motor spindle linear axes and housed the whole system in the most compact box possible. The complete cabling as well as the lighting are also located in the box. The closed box meets the requirements for work and machine safety and also protects the unit from damage.



The z-height adjustment of the camera box as well as the easy movability and installation at the place of operation as well as the accommodation of the electrics is taken over by our universal trolley.

On the right are the exemplary dimensions for this application.

